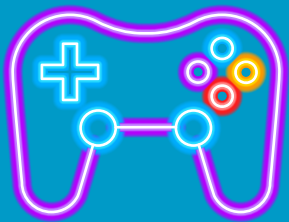


# Getting started

If you're not quite sure how to get started, take a look at our step-by-step guide and FAQ's before you begin. Our Fundraising events team are also on hand to answer any of your questions. Just drop an email to [events@epilepsy.org.uk](mailto:events@epilepsy.org.uk)



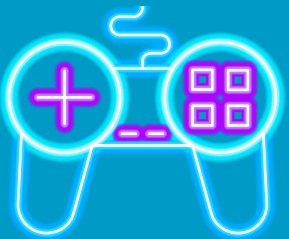
## Step 1

**Pick your fundraising challenge**



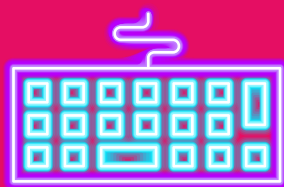
## Step 2

**Register your event with us**



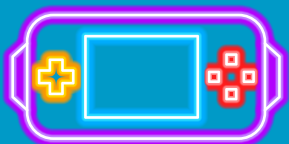
## Step 3

**Set up a fundraising page**



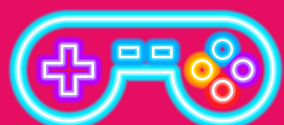
## Step 4

**Get streaming**



## Step 5

**Promote your event**



## Step 6

**Maximise your fundraising and get gaming!**

## Further information

Contact our Fundraising events team at [events@epilepsy.org.uk](mailto:events@epilepsy.org.uk) or by calling **0113 210 8824**

# FAQS

## How do I sign up to game/stream in aid of Epilepsy Action?

Decide on the challenge you'd like to take part in (take a look at our fundraising ideas kit to help get you started). Once you've picked your challenge, register your event with us and we'll send you everything you need.

## When can I hold my event?

You don't have to take part in your event on a certain day – it's entirely up to you when you'd like to hold your event.

## How do I stream my event?

To get started you'll need a fundraising page (such as JustGiving) and an account with a streaming platform (such as Twitch or YouTube). You'll also need to download streaming software (such as OBS) to connect your video broadcast to your streaming platform. Check out [JustGiving's step-by-step guide](#) on how to get up and running.

## How long can my stream last?

This is up to you but remember, it's important to look after yourself while streaming. Whether it's a 24 hour gaming marathon with friends or a solo challenge, take a look at our guidelines and tips on how to play safely.

## How do I promote my stream?

We have lots of downloadable social media graphics to help advertise your stream including some cool overlays. Register your event with us and we'll send you everything you need.

## Do I have to live stream games?

No. If you'd prefer not to stream your gaming challenge you can do something different instead, online or off! Just set yourself a gaming challenge, register your event with us and set up a fundraising page. Then ask friends and family to sponsor you. Oh and don't forget to post picture updates to your supporters.

## What games can I play?

This is up to you. You can play any game of your choice, on any console or PC. Or, pick a game you've played before but change your perspective or field of view to make it even more of a challenge!

## Still have a question?

Contact our Fundraising events team at [events@epilepsy.org.uk](mailto:events@epilepsy.org.uk) or by calling **0113 210 8824**