

Doodle Day 2023

Assembly plan

(To be presented within 2 weeks leading up to Doodle Day)

A large orange circle containing the text 'NATIONAL DOODLE DAY' in a playful, multi-colored, bubbly font. The letters are white with various colored outlines and shadows.

NATIONAL
DOODLE
DAY

This handy guide helps explain to pupils why they're taking part in a fundraising event in aid of Epilepsy Action. It also lets them know how having fun and raising money can make a difference to people's lives, including children like them.

Assembly outline

- **What is a charitable organisation?**
- **Who are Epilepsy Action and what do they do?**
- **Why support Epilepsy Action?**
- **Doodle Day activity outline**
- **How to get involved**



Duration

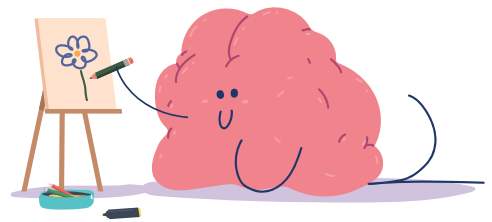
The assembly should last around 10-15 minutes and should be suitable for all ages. Content can be changed depending on the age of your pupils, and you can use our optional activities to extend your assembly.

Desired outcome

Pupils will understand how Epilepsy Action helps people living with epilepsy, including children and young people.

Pupils will understand what they'll be doing for Doodle Day and how they'll raise money in aid of Epilepsy Action.

Pupils will feel motivated, excited and proud to make a difference.



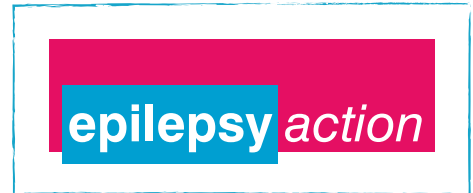


TEACHER'S NOTES:

Use these notes as a helpful guide for planning your assembly. All the information provided is for reference and can be adjusted as needed.

What is a charitable organisation?

A charity is an organisation who help support people who need it. In the case of Epilepsy Action, they help support people affected by epilepsy.



Who are Epilepsy Action?

Epilepsy Action is a national charity supporting everybody affected by epilepsy in the UK. Epilepsy affects around **620,000** people in the UK, including around **112,700** children and young people.



Optional activity: What is epilepsy?

Epilepsy is when something unusual happens in your brain. Your brain is like a very powerful computer. It controls everything you do. When your brain starts sending too many electrical messages, this can make different things happen to your body.



These things have lots of names, like fits, seizures, funny turns, and attacks. At Epilepsy Action, they call them seizures.

Some children can have seizures every day. And other children might only have them now and then. If you take epilepsy medicine, it might stop all your seizures.



Visit www.epilepsy.org.uk/info/what-is-epilepsy for further reading.



What do Epilepsy Action do?

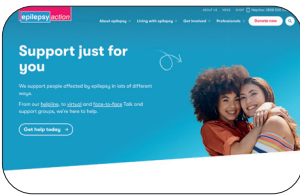
Epilepsy Action offers a range of advice, information and practical support through their services. Here are some of the services they provide:



- **Freephone helpline:** Their helpline provides vital support to over **9,490** people who get in touch every year. Many of these people are new to epilepsy, and feel they have nowhere else to turn.



- **Talk and Support groups:** Their groups around the country and online offer a safe and relaxed environment for people affected by epilepsy to share their experiences, thoughts and concerns with people who understand.



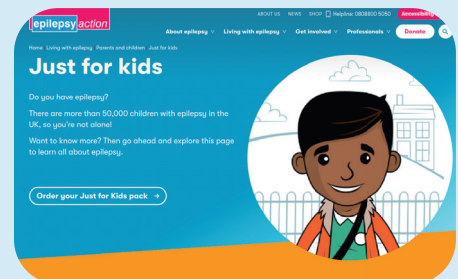
- **Epilepsy Action website:** Their newly-refreshed website features over **200** pages of information and over **150** printed resources for people to access.



- **Just For Kids packs:** They offer an epilepsy information and activity pack for 5–11-year-olds living with epilepsy, which helps them and their friends to understand the condition.



Optional activity: get the Epilepsy Action website up at www.epilepsy.org.uk and browse through a couple of pages for your pupils to see. You'll find our 'Just for Kids' section at www.epilepsy.org.uk/kids





Why help Epilepsy Action?

By raising money for Epilepsy Action, you'll be helping them to continue providing amazing services to help even more people living with epilepsy.

Every pound raised helps them to be there for people living with epilepsy, including children and their families – now, and in years to come.



Optional activity: Show your pupils the National Doodle Day Instagram page to give them some extra inspiration for their doodle www.instagram.com/nationaldoodleday

Fundraising activity outline

For this section you should outline to the pupils what they will be doing to participate. You can get specific information about Doodle Day on the [Epilepsy Action website](#), and also read our handy guide about the **School Doodle Day Art Exhibition** event that you'll be organising.

Try to make this as engaging as possible, to get the children excited about the event. Make sure they know what they need to do.

You can use the PowerPoint presentation provided to explain all about the event and the difference it will make for people living with epilepsy.

Good luck and

