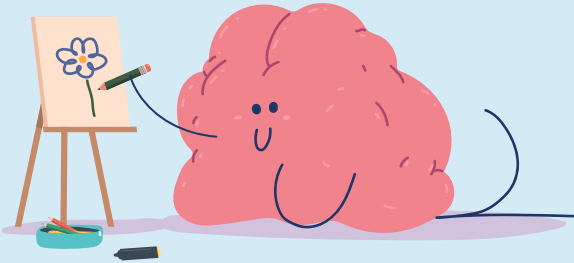


NATIONAL DOODLE DAY

Dear Parent/Carer, we would like to invite you to join us at the

Doodle Day Art Exhibition where we will be raising awareness and vital funds in aid of **Epilepsy Action** (registered charity in England and Wales No. 234343) to support people affected by epilepsy.



What is Doodle Day?

Epilepsy Action host '**National Doodle Day**' each year, where a selection of famous faces from the worlds of art, sport and entertainment pick up their pens, pencils and paints to create one-off doodles. These doodles are auctioned off to the highest bidder following a three-day

eBay auction. You can find out more at www.epilepsy.org.uk/doodleday

As part of National Doodle Day, we will be getting creative too! All pupils will be asked to create a doodle to feature in our very own Doodle Day Art Exhibition – **and you're all invited!**

To raise as much money as possible, we are hoping that you'll be able to attend to help make a difference for people living with epilepsy.

If you would like to find out more about Epilepsy Action and the work they do, you can visit www.epilepsy.org.uk or if you have any questions about our **Doodle Day Art Exhibition**, please contact the school office.

Yours faithfully,