



Survey results

Demographics



Demographics

This section outlines the people who responded to the Let's Talk About Epilepsy survey. This information is important to understand whose experiences, ideas and opinions are being reflected in the results.



Gender

Roughly 48% of people with epilepsy in the general population are women, and 72% of our respondents were women.

Our results significantly over-represent women.

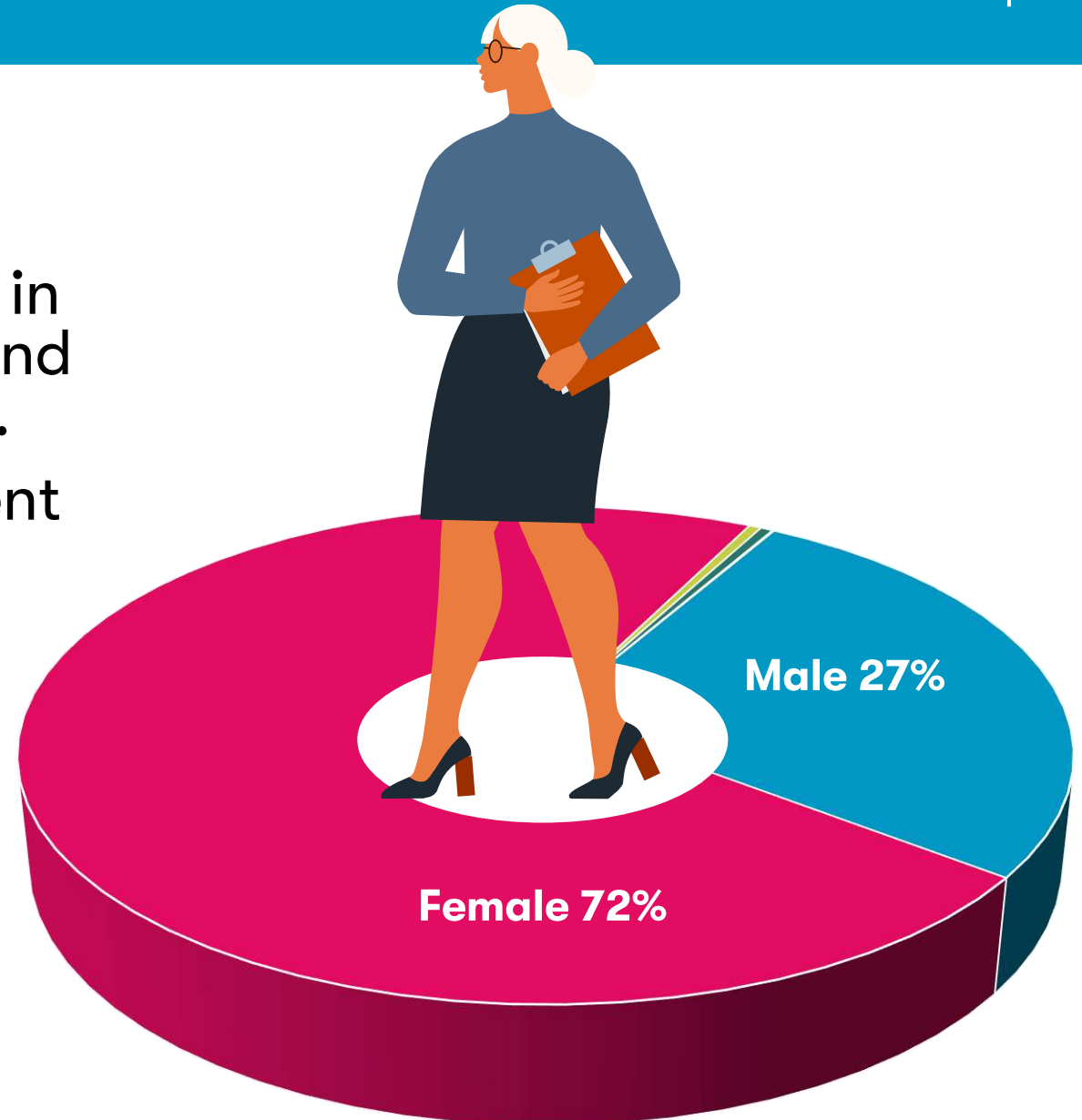
1282 Male

21 Prefer not to say

3406 Female

3 Other

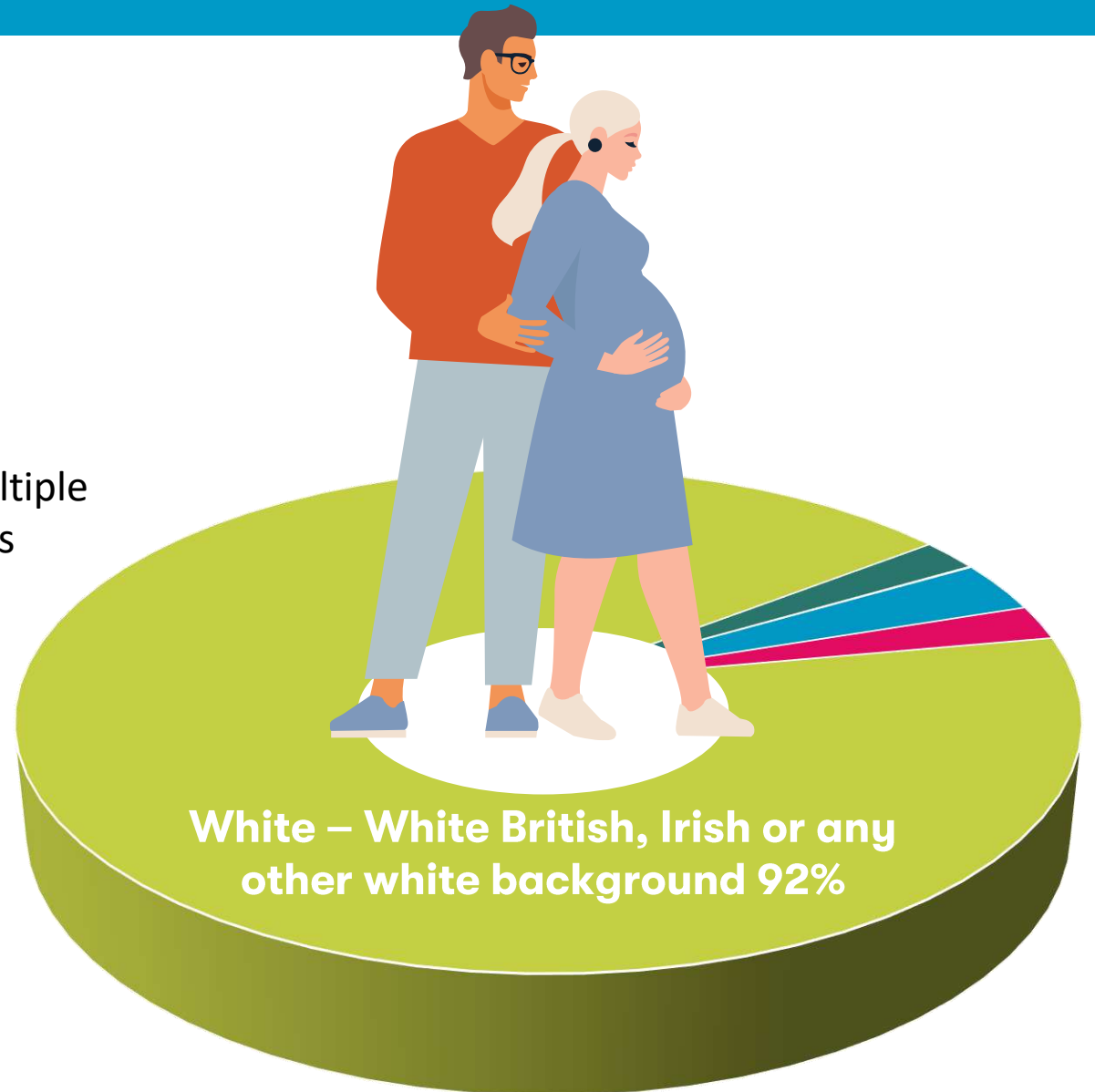
21 Non-binary



Ethnicity

These results overrepresent white people and underrepresent all other groups.

- 3%
 Asian - Asian British, Chinese, Indian, Pakistani or any other Asian background
- 2%
 Mixed or multiple ethnic groups
- 2%
 Black - Black British, Caribbean, African or any other black background
- 1%
 Other
- 92%
 White - White British, Irish or any other white background

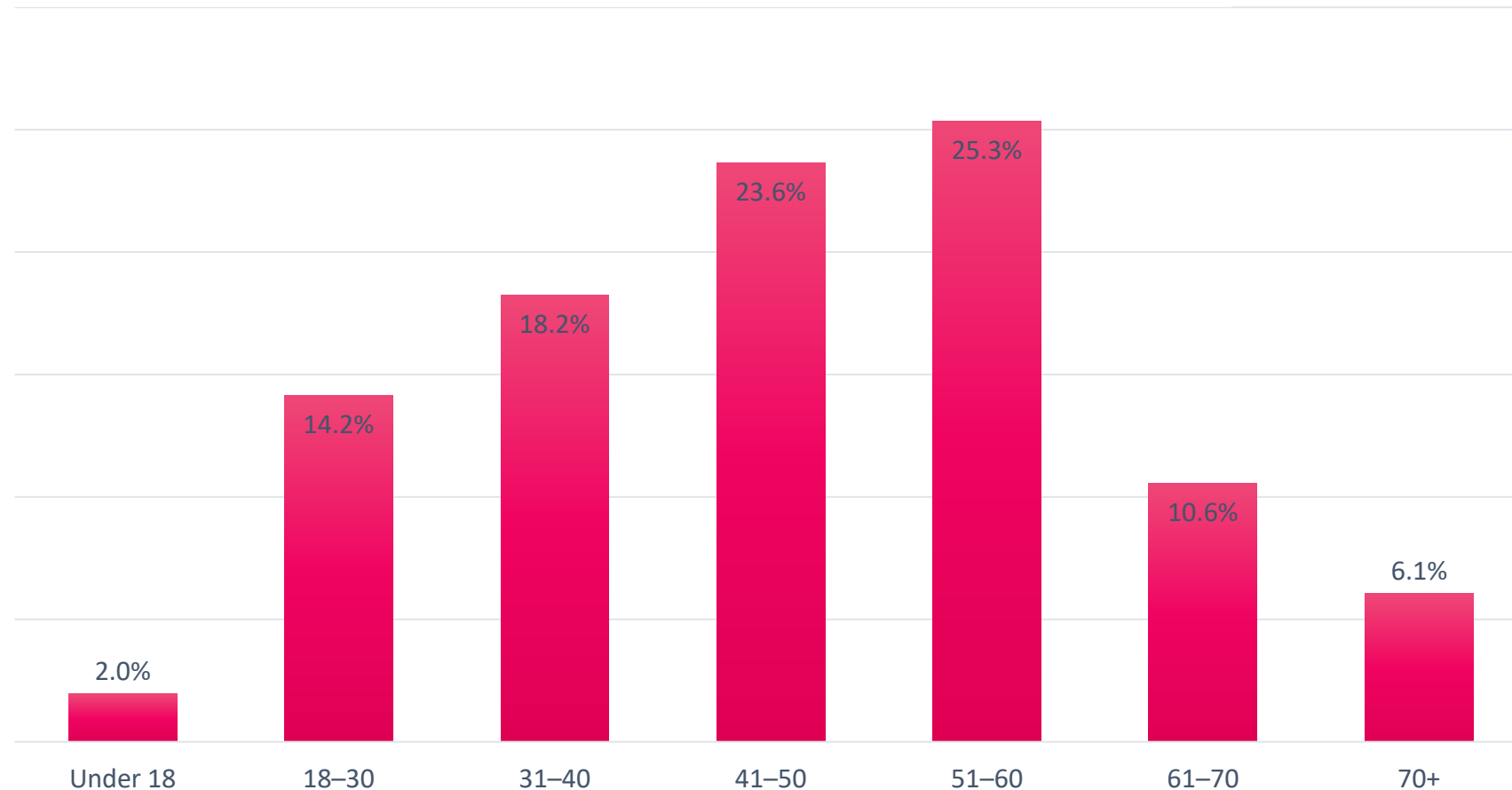


Age

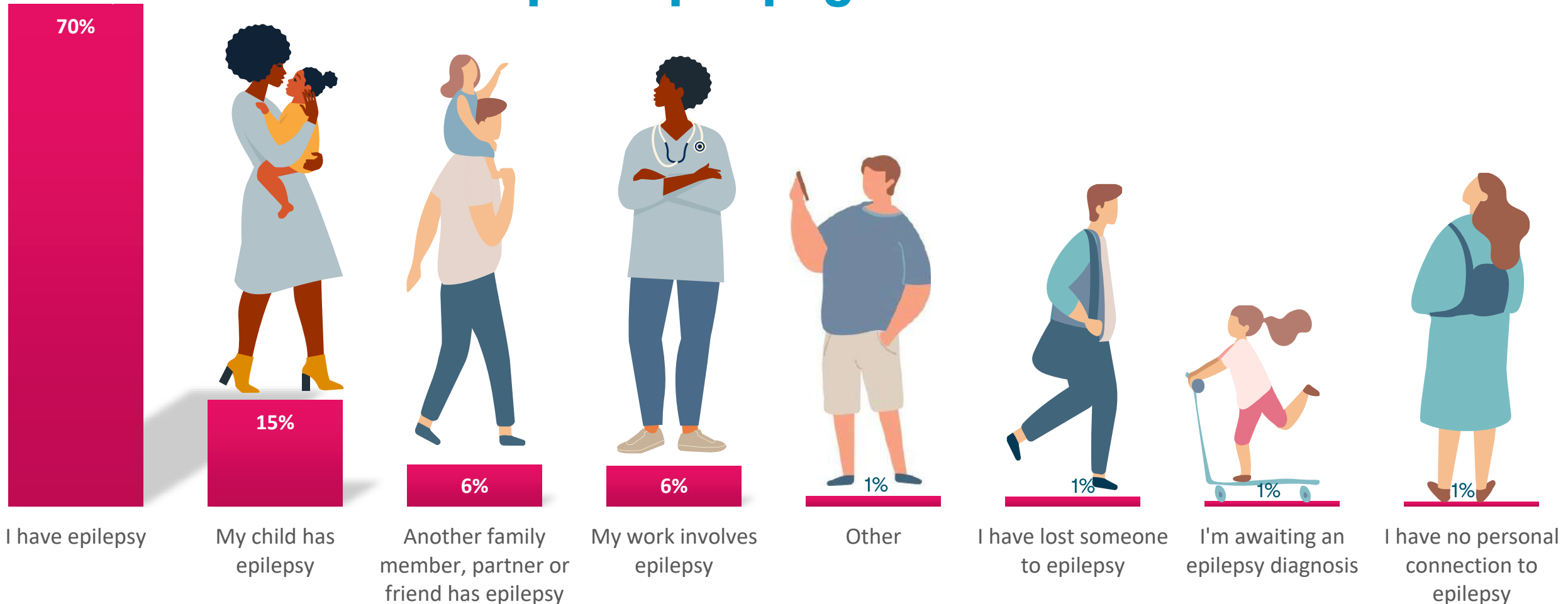
Our results **overrepresent** people aged 18-60 and **underrepresent** people who are younger and older.

50% of our respondents are aged 41-60. In the UK, 31% of people with epilepsy are aged 40-60.

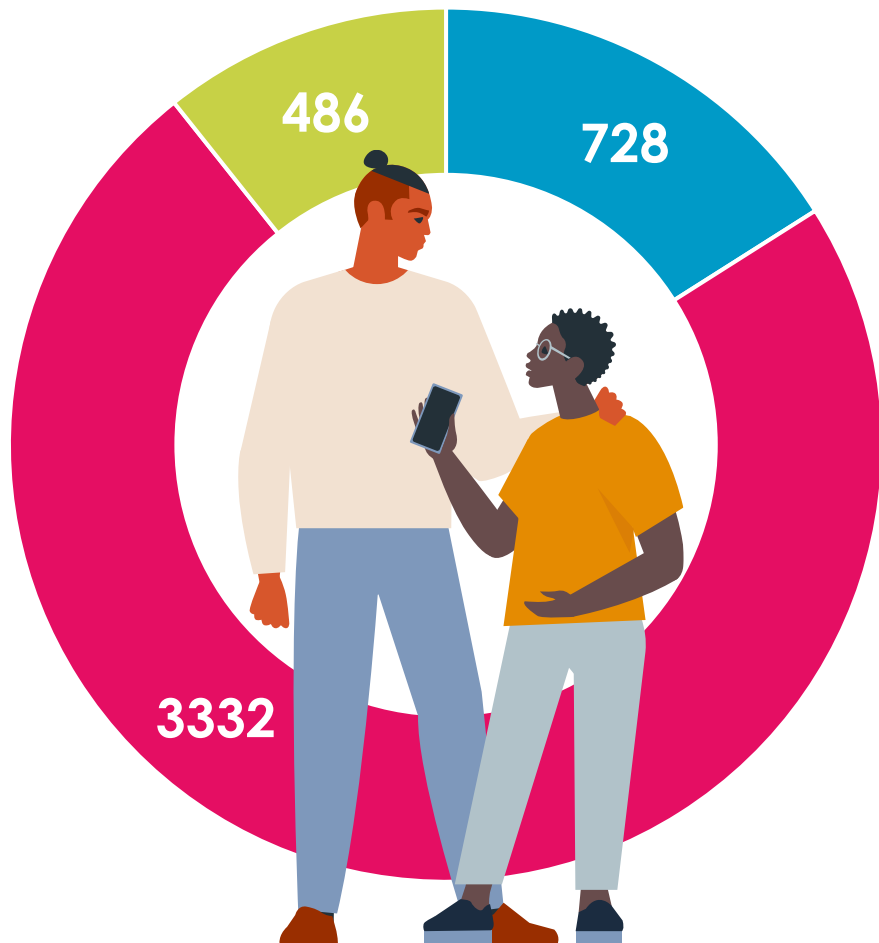
In the general UK population, 26% are aged 40-60. Our results over-represent people in this age group.



Relationship to epilepsy



Experience



Epilepsy is pretty new to me

16%

Epilepsy has been part of my life for a while now

73%

Epilepsy rarely affects my life now

11%

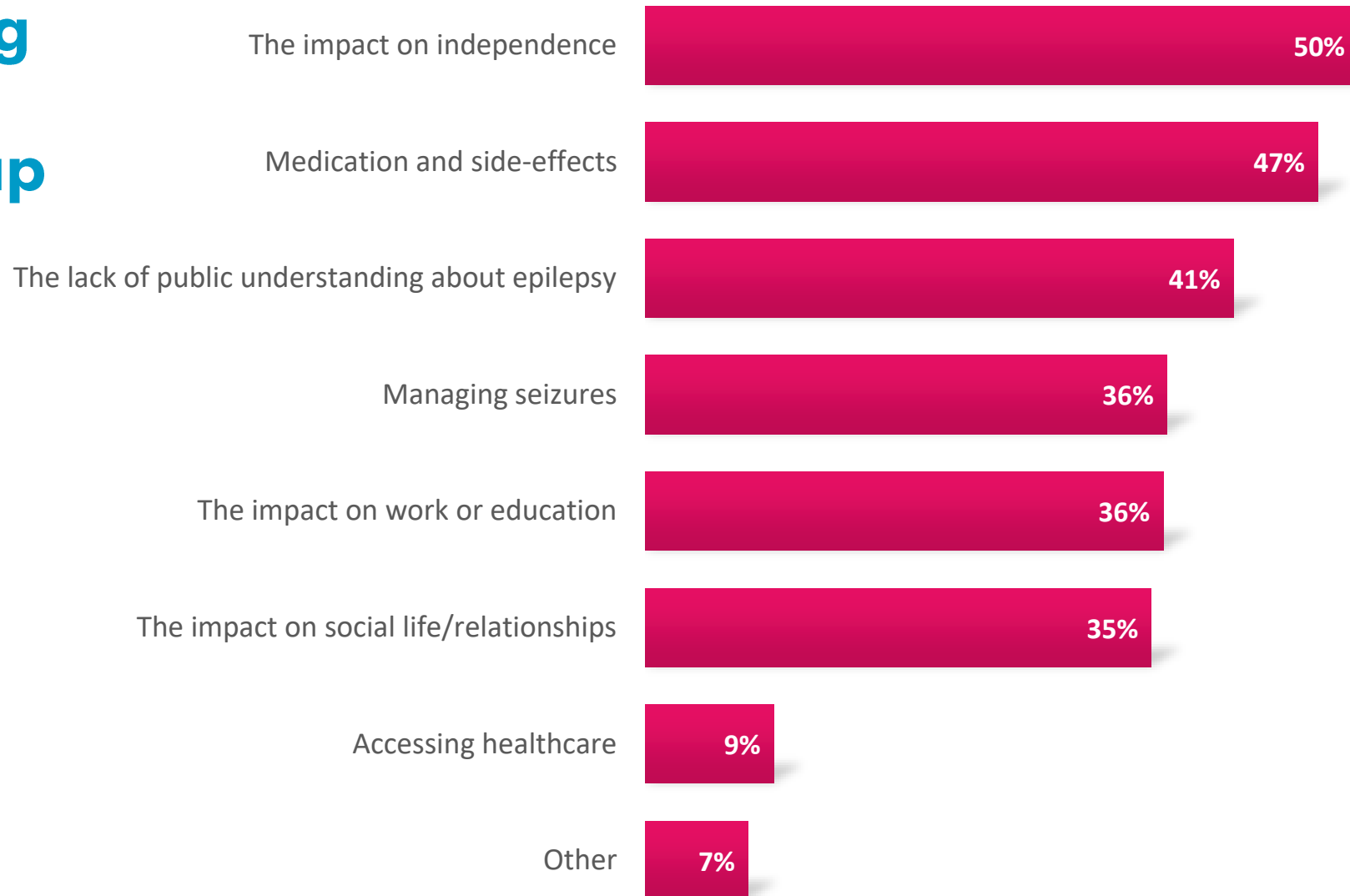
Results



What do you think the most challenging thing about living with epilepsy is? (Choose up to three options)

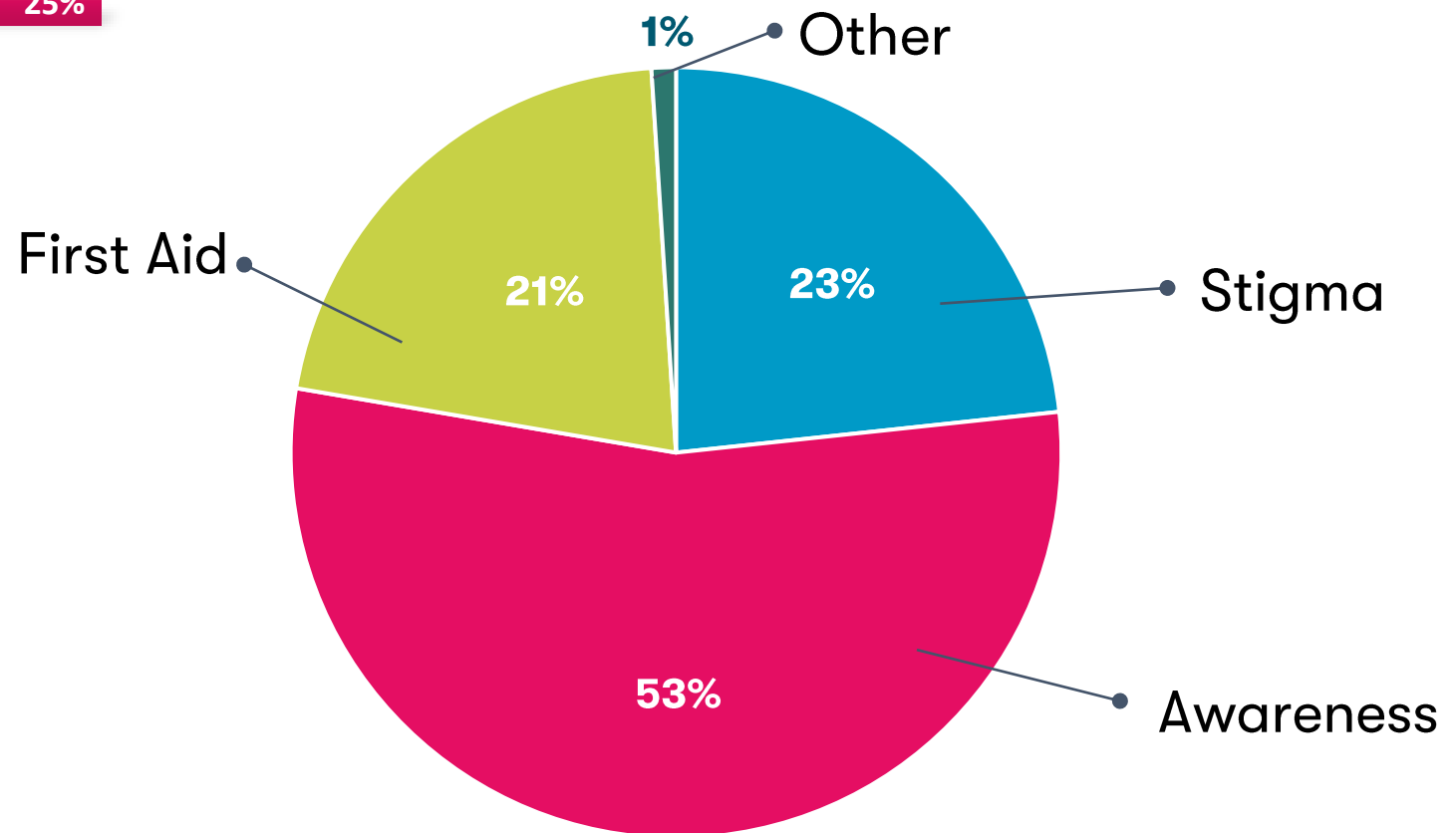
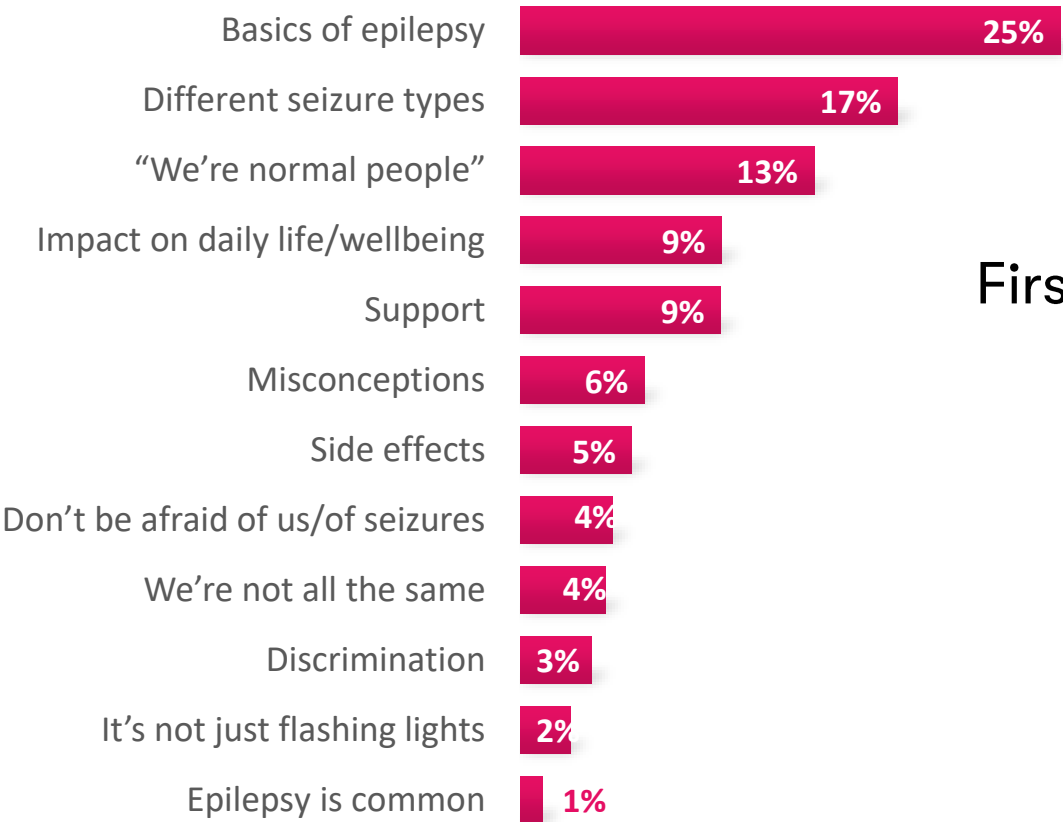
'Other' responses:

- Worry (76 respondents)
- Memory (24)
- Impact on health (21)
- Quality of healthcare (17)
- Impact on rest of family, fear of death/SUDEP, having children, confidence, money



If you could educate the public about one thing to do with epilepsy, what would it be?

The responses to have been broken down into four broad categories, shown on the pie chart, and more specific aspects of stigma and awareness are shown in the bar chart.



If you were in charge of a charity like Epilepsy Action for a week, what would your priorities be? (choose up to three options)

'I've got a better idea' responses:

- Support for PWE (56)
- Healthcare (36)
- Training (schools, employers and others)
- Campaigns
- Women's health
- Social support
- The positives of epilepsy

